

The contents of this publication are the copyright of the publisher and may not be reproduced (even extracts) unless prior written permission is granted. Every care has been taken to ensure the accuracy of the information contained in this publication but no liability can be accepted for any loss or damage whether direct, indirect or consequential arising out of the use of the information contained herein.

Le contenu de cette publication est soumis au copyright de l'éditeur et sa reproduction, même partielle, est interdite sans autorisation écrite préalable. Le plus grand soin a été apporté à l'exactitude des informations données dans cette publication mais SKF décline toute responsabilité pour les pertes ou dommages directs ou indirects découlant de l'utilisation du contenu du présent document.

Nachdruck, auch auszugsweise, nur mit unserer vorherigen schriftlichen Genehmigung gestattet. Die Angaben in dieser Druckschrift wurden mit größter Sorgfalt auf ihre Richtigkeit hin überprüft. Trotzdem kann keine Haftung für Verluste oder Schäden irgendwelcher Art übernommen werden, die sich mittelbar oder unmittelbar aus der Verwendung der hier enthaltenen Informationen ergeben.

El contenido de esta publicación es propiedad de los editores y no puede reproducirse (incluso parcialmente) sin autorización previa por escrito. Se ha tenido el máximo cuidado para garantizar la exactitud de la información contenida en esta publicación, pero no se acepta ninguna responsabilidad por pérdidas o daños, ya sean directos, indirectos o consecuentes, que se produzcan como resultado del uso de dicha información.

La riproduzione, anche parziale, del contenuto di questa pubblicazione è consentita soltanto previa autorizzazione scritta della SKF. Nella stesura è stata dedicata la massima attenzione al fine di assicurare l'accuratezza dei dati, tuttavia non si possono accettare responsabilità per eventuali errori od omissioni, nonché per danni o perdite diretti o indiretti derivanti dall'uso delle informazioni qui contenute.

O conteúdo desta publicação é de direito autoral do editor e não pode ser reproduzido (nem mesmo parcialmente), a não ser com permissão prévia por escrito. Todo cuidado foi tomado para assegurar a precisão das informações contidas nesta publicação, mas nenhuma responsabilidade pode ser aceita por qualquer perda ou dano, seja direto, indireto ou consequente, como resultado do uso das informações aqui contidas.

本出版物内容的著作权归出版者所有且未经事先书面许可不得被复制（甚至引用）。我们已采取了一切注意措施以确定本出版物包含的信息准确无误，但我们不对因使用此等信息而产生的任何损失或损害承担任何责任，不论此等责任是直接、间接或附随性的。

Содержание этой публикации является собственностью издателя и не может быть воспроизведено (даже частично) без предварительного письменного разрешения. Несмотря на то, что были приняты все меры по обеспечению точности информации, содержащейся в настоящем издании, издатель не несет ответственности за любой ущерб, прямой или косвенный, вытекающий из использования вышеуказанной информации.



SKF TMFT 36



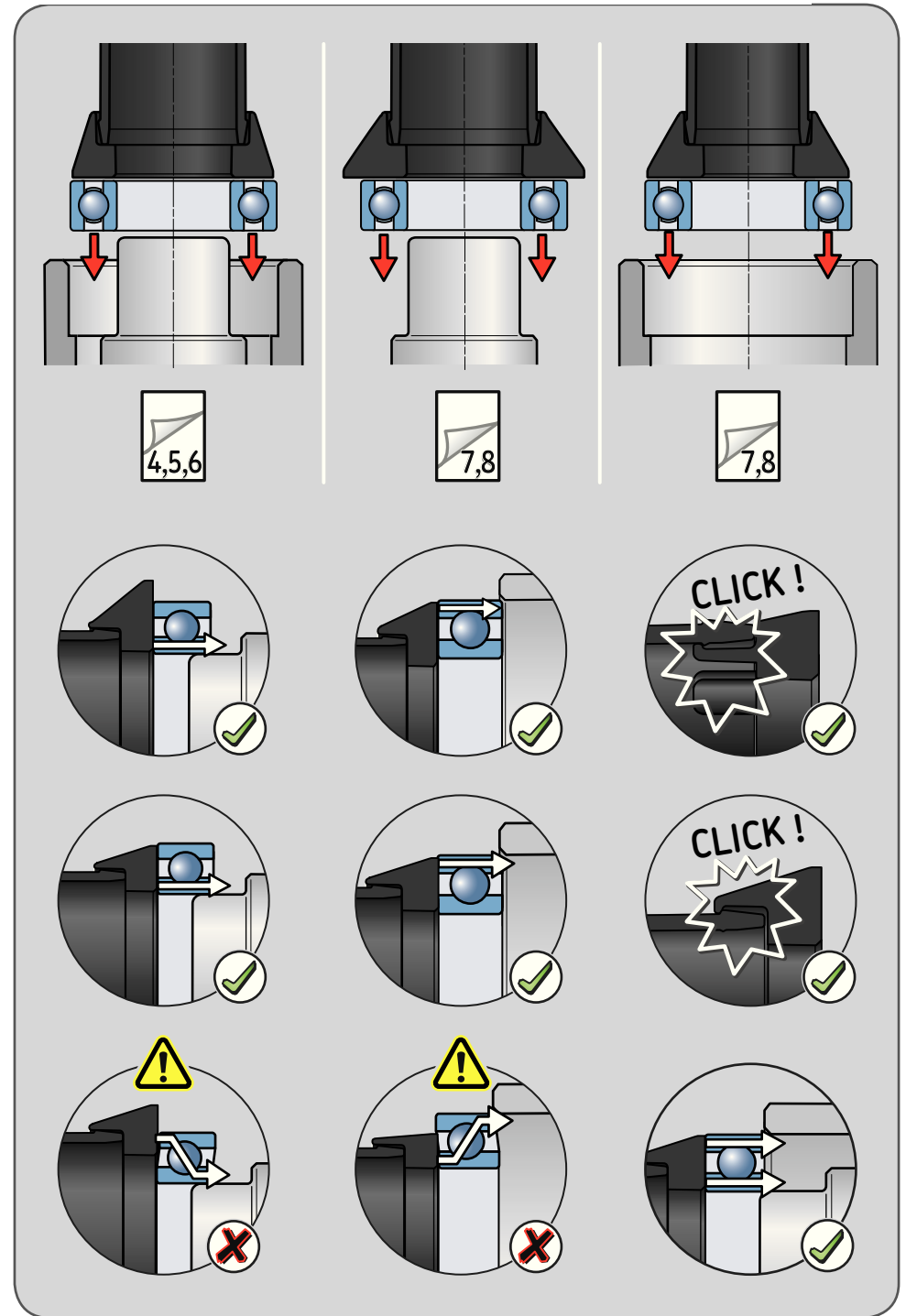
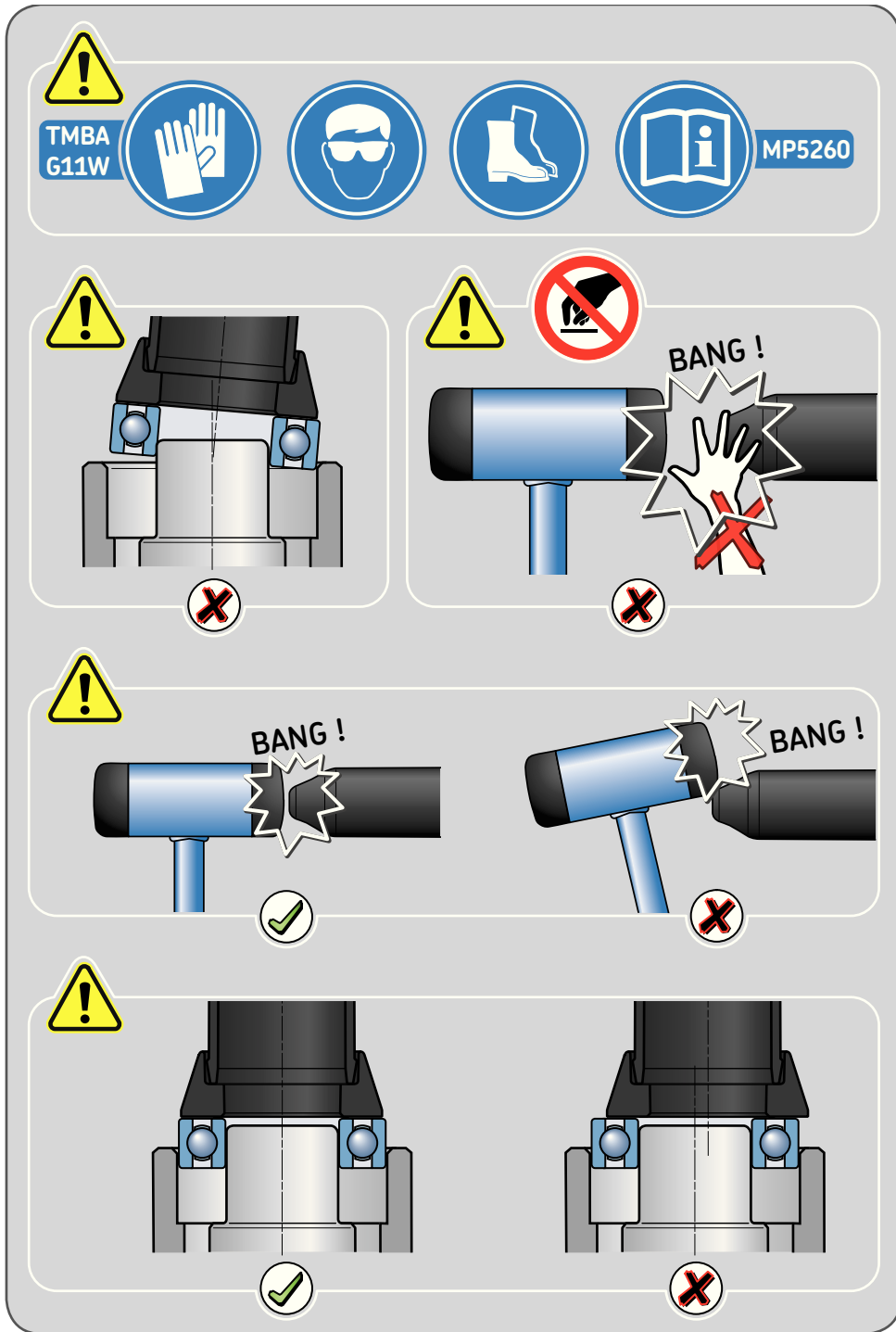
SKF Maintenance Products

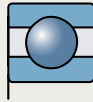
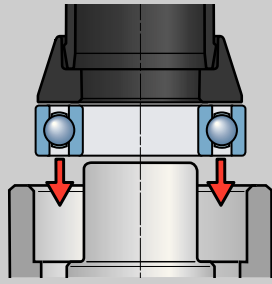
© SKF is a registered trademark of the SKF Group.
© SKF Group 2015/03

MP5260

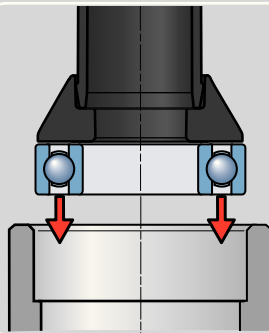
Instructions for use
Mode d'emploi
Bedienungsanleitung
Instrucciones de uso




Manuale d'istruzioni
Instruções de uso
使用说明书
Инструкция по эксплуатации

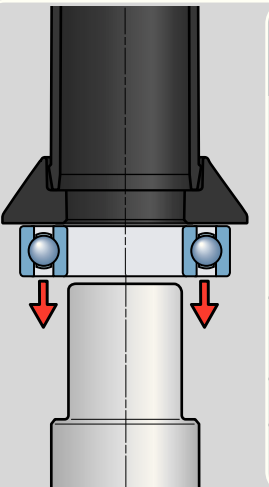







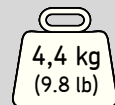
	10-26	10-30	10-35	12-28	12-32	12-37	15-32	15-35	15-42	17-35	17-40	17-47	20-42	20-47	20-52	25-47	25-52	25-62	30-55	30-62	30-72	35-62	35-72	35-80	40-68	40-80	40-90	45-75	45-85	45-100	50-80	50-90	50-110	55-90	55-100	55-120			
	60..	6000		6001		6002		6003		6003		6003	6004*		6005		6006		6006		6007		6007		6008		6009		6010		6010		6011		6011				
	62..	629	6200		6201		6202		6203		6203			6204		62/22	6205		62/28	6206		6207				6208			6209			6210			6211				
	63..			6300		6301		6302		6303		6303		6304		63/22	6305		63/28	6306				6307				6308		6309		6310					6311		
	64..															6403			6404				6405				6406		6407		6408						6409		
	160..						16002			16003			16004*		16005			16006			16007				16008		16009			16010			16011						
	161..	16100		16101																																			
	982..									98203			98204*		98205				98206																				
	63... 62...	63000	62200	62300	63001	62201	62301	63002	62202	62302	63003	62203	62303	63004*	62204	62304	63005	62205	62305	63006	62206	62306	63007	62207	62307	63008	62208	62308	63009	62209	62309	63010	62210	62310		62211	62311		
	2.. 3..																305		206	306		207	307			208	308		209	309		210	310		211	311			
	361...		361200		361201		361202				361203				361204		361205			361206			361207																
	70..	7000		7001		7002		7003					7004*		7005		7006			7007					7008			7009			7010			7011					
	72.. 73..		7200		7201	7301		7202	7302		7203	7303		7204	7304		7205	7305		7206	7306			7207	7307		7208	7308		7209	7309		7210	7310		7211	7311		
	QJ..							QJ202		QJ203	QJ303			QJ304	QJ205	QJ305		QJ206	QJ306		QJ207	QJ307			QJ208	QJ308			QJ309		QJ210			QJ211	QJ311				
	42.. 43..		4200		4201	4301		4202	4302		4203	4303		4204	4304		4205	4305		4206	4306			4207	4307		4208	4308		4209	4309		4210	4310		4211	4311		
	32.. 33..		3200		3201			3202	3302		3203	3303		3204	3304		3205	3305		3206	3306			3207	3307		3208	3308		3209	3309		3210	3310		3211	3311		
	12..	129	1200		1201			1202		1203				1204		1205			1206				1207			1208			1209			1210			1211				
	22..		2200		2201			2202		2203				2204		2205			2206				2207			2208			2209			2210			2211				
	13..					1301		1302			1303			1304		1305			1306			1307				1308			1309			1310			1311				
	23..				2301		2303			2303				2304		2305			2306			2307				2308		2309			2310			2311					
	213.. 223..																21305			21306			21307				21308			21309			21310			21311			
	222..													22205/20		22205			22206				22207			22208	22308		22209	22309		22210	22310		22211	22311			
	N 10.. N 2..						N 202			N 203			N 204	N 1005	N 205		N 1006	N 206		N 1007	N 207				N 1008	N 208		N 1009	N 209		N 1010	N 210		N 1011	N 211				
	N 3.. N 30..										N 303	N 3004*	N 304	N 3005		N 305	N 3006		N 306	N 3007			N 307		N 3008		N 308	N 3009		N 309	N 3010		N 310	N 3011		N 311			
	N 22.. N 23..									N 2203		N 2204	N 2304		N 2205	N 2305		N 2206	N 2306		N 2207	N 2307			N 2208	N 2308		N 2209	N 2309		N 2210	N 2310		N 2211	N 2311				
	302.. 303..						30302			30203	30303		30204	30304		30205	30305		30206	30306			30207	30307		30208	30308		30209	30309		30210	30310		30211	30311			
	313.. 320..											32004*		32005		31305	32006		31306	32007			31307	32007		32008		31308	32009		31309	32010		31310	32011		31311		
	322.. 323..										32303		32304		32205	32305		32206	32306		32207	32307			32207	32307		32208	32308		32209	32309		32210	32310		32211	32311	
	330.. 332..														33205			33206					33207			33208		33209		33010	33210		33011	33211					
	CARB®															C 2205		C 6006	C 2206				C 2207			C 2208		C 2209		C 4010	C 2210			C 2211					



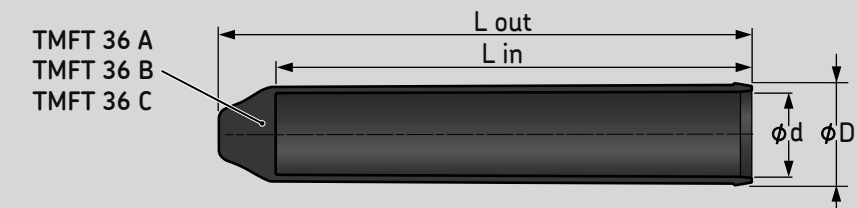
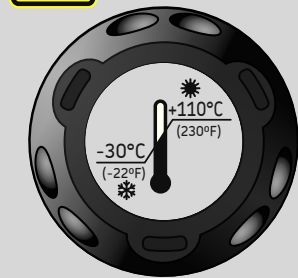
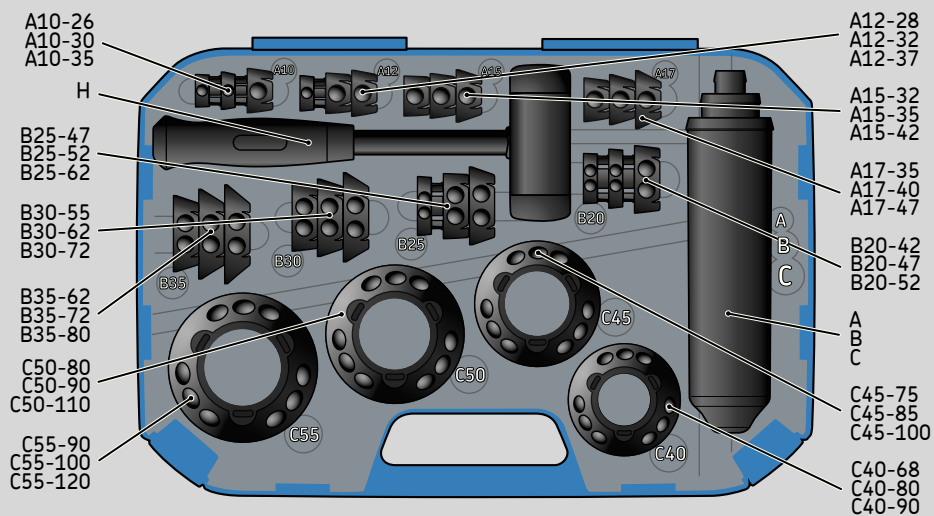
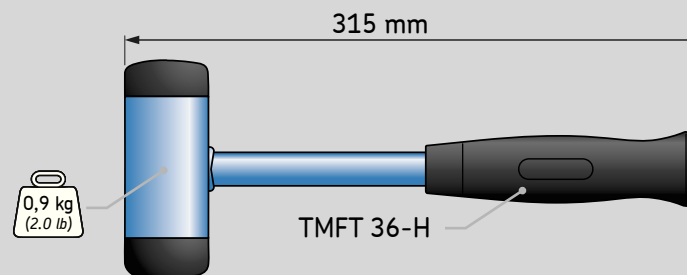
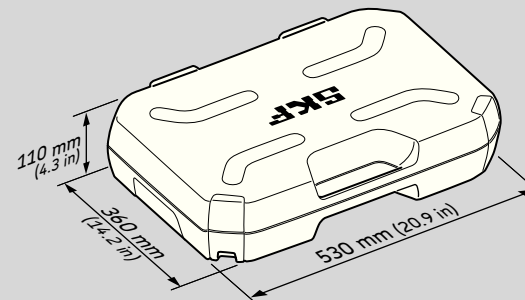
A 						B 						C 					
A10-26	A10-30	A12-28	A12-37	A15-32	B20-42	B25-47	B25-52	B30-55	B35-62	B35-72	C40-68	C40-90	C45-C85	C45-100	C50-80	C50-110	
618.	61803		61805	61804	61806	61807	61808	61809	61810	61811							
619..		61903	61902	61904	61905	61906		61907	61908	61910	61909				61911		
NU 4..											NU406		NU407		NU408	NU409	
NJ 4..											NJ406		NJ407		NJ408	NJ409	
CARB®														C4908V	C4910V		
											C6909V		C6912V		C6911V		



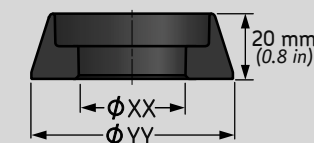
A 				B 				C 				
A10-26	A12-28	A15-32	A17-35	B20-42	B25-47	B30-55	B35-62	C40-68	C45-75	C50-80	C55-90	
60..				6004								
160..			16004									
982..			98204									
618..	61800	61801	61802	61803	61804	61805	61806	61807	61808	61809	61810	61811
619..	61900	61901	61902	61903	61904	61905	61906	61907	61908	61909	61910	61911
63...				63004								
NU 4..									NU406	NU407	NU408	NU409
NJ 4..									NJ406	NJ407	NJ408	NJ409
32...				32004								
CARB®									C4908		C4910	
											C6910	



TMFT 36



	D		d		L out		L in	
	mm	in	mm	in	mm	in	mm	in
TMFT 36 A	25	1.0	18	0.7	228	9.0	210	8.3
TMFT 36 B	45	1.7	37	1.4	235	9.3	210	8.3
TMFT 36 C	66	2.6	57	2.2	245	9.6	215	8.4



TMFT 36 C45-100 = TMFT 36 C45-10
 TMFT 36 C50-110 = TMFT 36 C50-11
 TMFT 36 C55-100 = TMFT 36 C55-10
 TMFT 36 C55-120 = TMFT 36 C55-12

TMFT 36 ..	TMFT 36 ..	TMFT 36 ..	TMFT 36 ..	TMFT 36 ..	TMFT 36 ..
A10-26	A15-32	B20-42	B30-55	C40-68	C50-80
A10-30	A15-35	B20-47	B30-62	C40-80	C50-90
A10-35	A15-42	B20-52	B30-72	C40-90	C50-110
A12-28	A17-35	B25-47	B35-62	C45-75	C55-90
A12-32	A17-40	B25-52	B35-72	C45-85	C55-100
A12-37	A17-47	B25-62	B35-80	C45-100	C55-120
A XX-YY		B XX-YY		C XX-YY	